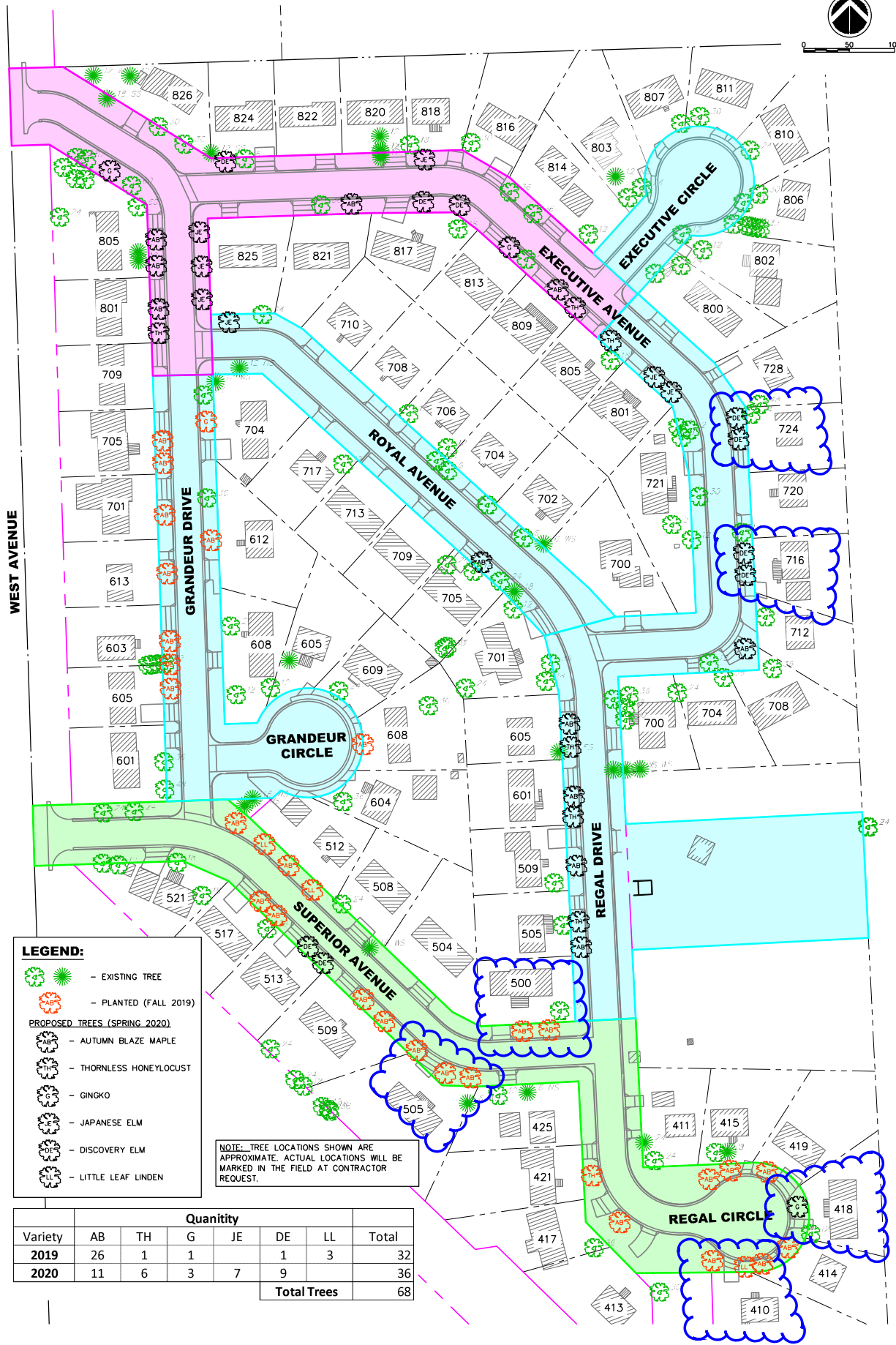




0 50 100



**LEGEND:**

- EXISTING TREE
- PLANTED (FALL 2019)
- PROPOSED TREES (SPRING 2020)**
- AUTUMN BLAZE MAPLE
- THORNLESS HONEYLOCUST
- GINKGO
- JAPANESE ELM
- DISCOVERY ELM
- LITTLE LEAF LINDEN

NOTE: TREE LOCATIONS SHOWN ARE APPROXIMATE. ACTUAL LOCATIONS WILL BE MARKED IN THE FIELD AT CONTRACTOR REQUEST.

Variety	Quantity						Total
	AB	TH	G	JE	DE	LL	
2019	26	1	1		1	3	32
2020	11	6	3	7	9		36
	<b>Total Trees</b>						<b>68</b>

**CROOKS**  
A GREAT PLACE TO COME HOME TO!

**Palmira Tree Plantings**  
Crooks, South Dakota

**DGR ENGINEERING**  
2909 E. 57TH STREET, SUITE 101  
SIOUX FALLS, SD 57108  
(605) 339-4157 office  
(605) 339-4175 fax  
dgr.com